

# Kuwi Easter Basket



Fill your basket with Kuwi toy or Easter goodies



FOLD

COLOUR ME!

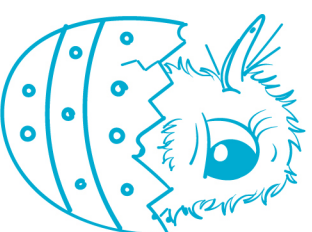
# How to put it together

*Tip: Glue your Kuwi basket onto card to make it more sturdy.*

- First, add your touch by colouring in Kuwi and her friends.
- Cut around the black dashed line.
- Fold dotted lines.
- Apply glue to the glue tabs.
- Carefully slot the side tabs through the slits in the egg and press down on the glue tabs.
- Fill Kuwi Easter basket with your choice of goodies!



GLUE THIS SIDE TO THE BACK OF EGG



GLUE HERE

GLUE HERE

EVERYONE IT'S EASTER!

Kuwi and the team would love to see your creations! Send in a picture to [kati@illustrated.co.nz](mailto:kati@illustrated.co.nz)

